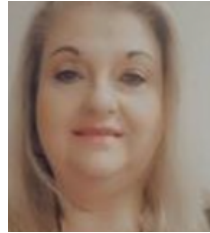


FAYETTE COUNTY 4-H

MARCH 2025 NEWSLETTER



Manda Clark
4-H Agent
amanda.clark@uky.edu



Robin Grace
4-H Program Assistant
robin.grace@uky.edu



Landon Withers
4-H Program Assistant
landon.withers@uky.edu



Hello 4-H Families!

As we welcome the month of March, I want to remind everyone that 4-H camp sign-ups are now open! Don't miss out on this exciting opportunity for your child to experience all the fun and learning that camp has to offer.

Thank you so much for your patience during this time as I'm currently the only agent available. Rest assured, we're hopeful that new agents will be joining us soon to help expand our programs and support your 4-H needs.

Spring is right around the corner, and we have plenty of exciting activities and new clubs starting up. Keep an eye out for more details, and as always, thank you for being a part of the 4-H community!

**Best regard,
Manda Clark
amanda.clark@uky.edu**





Cloverbuck Camps

Save The Date

July 26-28

More Info to Come!

Manda

amanda.clark@uky.edu



FAYETTE COUNTY 4-H STEM CLUB-MEDICAL SCIENCES

Open for ages 8-18

Most workshops will have a \$15 supply fee

Typically meets on Friday evenings

NEXT MEETING:
APRIL 18TH
5:30PM-7:00PM

Breathing + Heart:
April 18th

Wilderness Medicine: May
16th

Sign up here:
bit.ly/fayettestemclub



WHY DID THE CHICKEN CROSS THE ROAD?

TO GET TO FAYETTE COUNTY 4-H'S POULTRY CLUB!



OPEN TO YOUTH AGES 9-18 YEARS OLD. YOUTH AND THEIR CHICKENS WILL LEARN BREEDS AND SPECIES, COOKING TECHNIQUES, ANATOMY, SHOWMANSHIP, AND RESPONSIBLE OWNERSHIP.

YOU DO NOT HAVE TO OWN CHICKENS TO JOIN.

THE CLUB WILL MEET NEXT ON MARCH 19TH AT 6PM. YOU MUST BE ENROLLED TO ATTEND. MEETINGS TAKE PLACE AT THE FAYETTE COUNTY COOPERATIVE EXTENSION OFFICE.

CONTACT MANDA AT AMANDA.CLARK@UKY.EDU TO REGISTER

Cooperative Extension Service

Agriculture and Natural Resources
Family and Consumer Sciences
4-H Youth Development
Community and Economic Development

MARTIN-GATTON COLLEGE OF AGRICULTURE, FOOD AND ENVIRONMENT

Educational programs of Kentucky Cooperative Extension serve all people regardless of economic or social status and will not discriminate on the basis of race, color, ethnic origin, national origin, creed, religion, political belief, sex, sexual orientation, gender identity, gender expression, pregnancy, marital status, genetic information, age, veteran status, physical or mental disability or reprisal or retaliation for prior civil rights activity. Reasonable accommodation of disability may be available with prior notice. Program information may be made available in languages other than English. University of Kentucky, Kentucky State University, U.S. Department of Agriculture, and Kentucky Counties, Cooperating. Lexington, KY 40506



Disabilities
accommodated
with prior notification.

Fayette County 4-H Junior Homemakers



6th-12th grades

3/20 6pm-7pm

we will be making no sew blankets



Please register with Manda at
amanda.clark@uky.edu for questions!

**Cooperative
Extension Service**

Agriculture and Natural Resources
Family and Consumer Sciences
4-H Youth Development
Community and Economic Development

MARTIN-GATTON COLLEGE OF AGRICULTURE, FOOD AND ENVIRONMENT

Educational programs of Kentucky Cooperative Extension serve all people regardless of economic or social status and will not discriminate on the basis of race, color, ethnic origin, national origin, creed, religion, political belief, sex, sexual orientation, gender identity, gender expression, pregnancy, marital status, genetic information, age, veteran status, physical or mental disability or receipt or retaliation for prior civil rights activity. Reasonable accommodation of disability may be available with prior notice. Program information may be made available in languages other than English. University of Kentucky, Kentucky State University, U.S. Department of Agriculture, and Kentucky Genetics, Cooperating. Lexington, KY 40506



Disabilities
accommodated
with prior notification.

Fayette County 4-H Teen Club

Leadership, Friendship, Community Service, and Life Skills

Meeting Dates:

March 10th
April 14th
6pm-7pm

Dinner will be provided!

Register with Manda at
amanda.clark@uky.edu.

Cooperative
Extension Service

Agriculture and Natural Resources
Family and Consumer Sciences
4-H Youth Development
Community and Economic Development

MARTIN-GATTON COLLEGE OF AGRICULTURE, FOOD AND ENVIRONMENT

Educational programs of Kentucky Cooperative Extension serve all people regardless of economic or social status and will not discriminate on the basis of race, color, ethnic origin, national origin, creed, religion, political belief, sex, sexual orientation, gender identity, gender expression, pregnancy, marital status, genetic information, age, veteran status, physical or mental disability or physical or mental health care status, or any other basis prohibited by law. Reasonable accommodation of disability may be available with prior notice. Program interpretation may be made available in languages other than English.
University of Kentucky, Kentucky State University, U.S. Department of Agriculture, and Kentucky Counties, Cooperative Extension Service
Lexington, KY 40546





Fayette
2024-2025



Martin-Gatton
College of Agriculture,
Food and Environment
University of Kentucky.

NATURE CLUB

**Next meeting:
March 11th
6pm**

Fayette County Extension Office

Register with Manda at amanda.clark@uky.edu

Cooperative Extension Service

Agriculture and Natural Resources
Family and Consumer Sciences
4-H Youth Development
Community and Economic Development

MARTIN-GATTON COLLEGE OF AGRICULTURE, FOOD AND ENVIRONMENT

Educational programs of Kentucky Cooperative Extension serve all people regardless of economic or social status and will not discriminate on the basis of race, color, ethnic origin, national origin, creed, religion, political belief, sex, sexual orientation, gender identity, gender expression, pregnancy, marital status, genetic information, age, veteran status, physical or mental disability or reprisal or retaliation for prior civil rights activity. Reasonable accommodation of disability may be available with prior notice. Program information may be made available in languages other than English. University of Kentucky, Kentucky State University, U.S. Department of Agriculture, and Kentucky Counties, Cooperating. Lexington, KY 40506



Disabilities
accommodated
with prior notification.

FIBER ARTS CLUB



4/12 10AM-12PM SPRING BASKET

5/10 10AM-12PM MACARME

\$10 PER CLASS SESSION

**REACH OUT TO MANDA AT
AMANDA.CLARK@UKY.EDU
WITH ANY QUESTIONS.**



**Cooperative
Extension Service**

Agriculture and Natural Resources
Family and Consumer Sciences
4-H Youth Development
Community and Economic Development

MARTIN-GATTON COLLEGE OF AGRICULTURE, FOOD AND ENVIRONMENT

Educational programs of Kentucky Cooperative Extension Service are available to all people regardless of economic or social status and will not discriminate on the basis of race, ethnic origin, national origin, creed, religion, political belief, sex, sexual orientation, gender identity, gender expression, pregnancy, marital status, parental status, genetic information, or veteran status. Physical or mental disability is not a barrier to participation. Reasonable accommodations for people with disabilities are available with prior notice. Program information may be made available in languages other than English. University of Kentucky/Kentucky State University U.S. Department of Agriculture, and Kentucky Cooperative Extension Service, Lexington, KY 40546





FAYETTE COUNTY 4-H SUMMER CAMP

An adventure 65 million years in the making

JUNE 30-JULY 4, 2025

Applications available on our website
starting February 17, 2025!

<https://fayette.ca.uky.edu/4hcamp>



JM Feltner 4-H Camp
London, KY



**Cooperative
Extension Service**

Agriculture and Natural Resources
Family and Consumer Sciences
4-H Youth Development
Community and Economic Development

MARTIN-GATTON COLLEGE OF AGRICULTURE, FOOD AND ENVIRONMENT

Educational programs of Kentucky Cooperative Extension serve all people regardless of economic or social status and will not discriminate on the basis of race, color, ethnic origin, national origin, creed, religion, political belief, sex, sexual orientation, gender identity, gender expression, pregnancy, marital status, genetic information, age, veteran status, physical or mental disability or reprisal or retaliation for prior civil rights activity. Reasonable accommodation of disability may be available with prior notice. Program information may be made available in languages other than English.
University of Kentucky, Kentucky State University, U.S. Department of Agriculture, and Kentucky Counties, Cooperating.
Lexington, KY 40506



Disabilities
accommodated
with prior notification.

CAMPER - AGES 9 TO 14 - \$200
CIT - AGE 15 - \$200
JC - AGES 16 & 17 - FREE
AC - AGES 18+ - FREE (PLUS ONE CAMPER ATTENDS FOR FREE)

SCHOLARSHIPS AVAILABLE

Applications can be located on our website or you may request a printed copy be mailed to you by calling the extension office at 859-257-5582.

TO REGISTER

VISIT OUR WEBSITE TO DOWNLOAD A CAMPER REGISTRATION PACKET. RETURN THE PACKET AND \$50.00 DEPOSIT TO THE FAYETTE COUNTY EXTENSION OFFICE. (FULL INSTRUCTIONS INCLUDED IN PAPERWORK) SPACES ARE FIRST COME FIRST SERVE AND CAN ONLY BE HELD WITH A REGISTRATION PACKET AND DEPOSIT.

DUE DATES

REGISTRATION PACKETS AND FULL PAYMENT ARE DUE IN THE EXTENSION OFFICE BY 4:30PM, WEDNESDAY, JUNE 4, 2025 OR WHEN CAMP REACHES CAPACITY.

ORIENTATION DATES

MONDAY, JUNE 16TH AT 4:00P OR 5:45P
ORIENTATION IS REQUIRED FOR ALL NEW CAMPERS. RETURNING CAMPERS ARE WELCOME TO ATTEND BUT IT IS NOT REQUIRED.

QUESTIONS? WANT TO VOLUNTEER?

CONTACT MANDA CLARK AT AMANDA.CLARK@UKY.EDU OR CALL 859-257-5582

A HUGE THANK YOU TO THE FAYETTE COUNTY EXTENSION DISTRICT BOARD FOR HELPING LOWER THE COST OF 4-H CAMP!

Lead the Pack at 4-H Camp

Counselors Needed for a Dino-sized Adventure!

Serving as a counselor gives you the chance to serve as a role model for campers, be outdoors, and change lives! Please fill out the questionnaire to receive information.



[Go here: bit.ly/campcounselorinterest](http://bit.ly/campcounselorinterest)

Teen Leaders must be 16 or 17 by June 30th.

Adult leaders must be 18+ by June 30th.

Mandatory dates for camp:

Applications due: within 2 weeks of receiving.

Counselor Training: June 14th 10am-3pm

Camper Orientation: June 16th 4pm and 5:45pm

CAMP: June 30th-July 4th

Email Manda at amanda.clark@uky.edu with questions!



**Cooperative
Extension Service**

Agriculture and Natural Resources
Family and Consumer Sciences
4-H Youth Development
Community and Economic Development

MARTIN-GATTON COLLEGE OF AGRICULTURE, FOOD AND ENVIRONMENT

Educational programs of Kentucky Cooperative Extension serve all people regardless of economic or social status and will not discriminate on the basis of race, color, ethnic origin, national origin, creed, religion, political belief, sex, social orientation, gender identity, gender expression, pregnancy, marital status, genetic information, age, veteran status, physical or mental disability or reprisal or retaliation for prior civil rights activity. Reasonable accommodation of disability may be available with prior notice. Program information may be made available in languages other than English.
University of Kentucky, Kentucky State University, US Department of Agriculture, and Kentucky Counties, Cooperating.
Lexington, KY 40506



Disabilities
accommodated
with prior notification.



NEEDLE ARTS CLUB

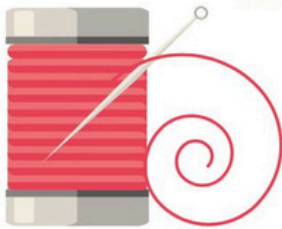
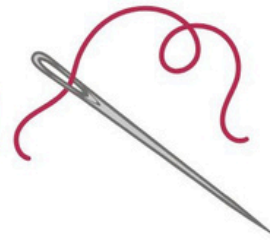
DATES AND TIME:

APRIL 2ND 5:30PM-7PM

APRIL 9TH 5:30PM-7PM

APRIL 16TH 5:30PM-7PM

APRIL 30TH 5:30PM-7PM



REGISTER WITH MANDA AT AMANDA.CLARK@UKY.EDU



**Cooperative
Extension Service**

Agriculture and Natural Resources
Family and Consumer Sciences
4-H Youth Development
Community and Economic Development

MARTIN-GATTON COLLEGE OF AGRICULTURE, FOOD AND ENVIRONMENT

Educational programs of Kentucky Cooperative Extension serve all people regardless of economic or social status and will not discriminate on the basis of race, color, ethnic origin, national origin, creed, religion, political belief, sex, sexual orientation, gender identity, gender expression, pregnancy, marital status, genetic information, age, veteran status, physical or mental disability or receipt or refusal to accept civil rights activity. Reasonable accommodations of disability may be available with prior notice. Program information may be made available in languages other than English. University of Kentucky, Kentucky State University, U.S. Department of Agriculture, and Kentucky Counties, Cooperating. Lexington, KY 40506



Disabilities
accommodated
with prior notification



Fayette County 4-H Communications Contest

March 27th, 2025

Location: Fayette County Extension office

Registration begins at 5:45pm

Speeches and Demonstrations begin at 6pm

Registration deadline is March 17th

Register here: bit.ly/fayettecocommcontest

 Martin-Gatton
College of Agriculture,
Food and Environment
University of Kentucky.



Speeches-

Junior Youth: 3 to 5 minutes long for ages 9-13 as of 1/1/25.

Senior Youth: 5 to 7 minutes long for ages 14-19 as of 1/1/25.

You may choose any topic.

No visual aids are accepted, dramatic readings, or dramatic monologues,
and recitation of poems will not be accepted.

Demonstrations-

Junior Demonstrations:

ages 9-13 as of 1/1/25

Senior Demonstrations-

ages 14-19 as of 1/1/125

Time limit for demonstrations is 5-15 minutes.

Demonstrations must have a posterboard, or a trifold poster as an aid.

Contact Manda at amanda.clark@uky.edu with
any questions.

Cooperative Extension Service

Agriculture and Natural Resources
Family and Consumer Sciences
4-H Youth Development
Community and Economic Development

MARTIN-GATTON COLLEGE OF AGRICULTURE, FOOD AND ENVIRONMENT

Educational programs of Kentucky Cooperative Extension serve all people regardless of economic or social status and will not discriminate on the basis of race, color, ethnic origin, national origin, creed, religion, political belief, sex, sexual orientation, gender identity, gender expression, pregnancy, marital status, genetic information, age, veteran status, physical or mental disability or reprisal or retaliation for prior civil rights activity. Reasonable accommodation of disability may be available with prior notice. Program information may be made available in languages other than English.
University of Kentucky, Kentucky State University, U.S. Department of Agriculture, and Kentucky Counties, Cooperating.
Lexington, KY 40506



Global Kitchen Adventures at Home

A Self-Paced at Home Experience

Explore cultures, countries, and food with this 7 week program. Youth will come to the Extension office and cook an item from a country.

YOU MUST REGISTER TO ATTEND!

Registration will open March 7th.

Cloverbuds can participate!

Register here: bit.ly/globalkitchenadventurehome

Pay here: bit.ly/fayettecounty4hpayment

Countries:

Spain

Sweden

El Salvador

Korea

Russia

England



Dates:

4/1

4/8

4/15

4/29

5/13

5/20

Email Manda at amanda.clark@uky.edu



**Cooperative
Extension Service**

Agriculture and Natural Resources
Family and Consumer Sciences
4-H Youth Development
Community and Economic Development

MARTIN-GATTON COLLEGE OF AGRICULTURE, FOOD AND ENVIRONMENT

Educational programs of Kentucky Cooperative Extension serve all people regardless of economic or social status and will not discriminate on the basis of race, color, ethnic origin, national origin, creed, religion, political belief, sex, sexual orientation, gender identity, gender expression, pregnancy, marital status, genetic information, age, veteran status, physical or mental disability or reprisal or retaliation for prior civil rights activity. Reasonable accommodation of disability may be available with prior notice. Program information may be made available in languages other than English.
University of Kentucky, Kentucky State University, US Department of Agriculture, and Kentucky Counties, Cooperating.
Lexington, KY 40506



Disability
accommodated
with prior notification.

Global Kitchen Adventures

Explore cultures, countries, and food with this 7 week program. Youth will come to the Extension office and cook an item from a country.

Space is LIMITED.

YOU MUST REGISTER TO ATTEND!

Registration will open March 7th.

Ages: 9 and up!

Register here: bit.ly/globalkitchenadventures

Pay here: bit.ly/fayettecounty4hpayment

Countries:

Spain

Sweden

El Salvador

Korea

Russia

England



Dates:

4/1 5:30-7pm

4/8 6pm-7pm

4/15 6pm-7pm

4/29 6pm-7pm

5/13 6pm-7pm

5/20 6pm-7pm

Email Manda at amanda.clark@uky.edu



Cooperative
Extension Service

Agriculture and Natural Resources
Family and Consumer Sciences
4-H Youth Development
Community and Economic Development

MARTIN-GATTON COLLEGE OF AGRICULTURE, FOOD AND ENVIRONMENT

Educational programs of Kentucky Cooperative Extension serve all people regardless of economic or social status and will not discriminate on the basis of race, color, ethnic origin, national origin, creed, religion, political belief, sex, sexual orientation, gender identity, gender expression, pregnancy, marital status, genetic information, age, veteran status, physical or mental disability or reprisal or retaliation for prior civil rights activity. Reasonable accommodation of disability may be available with prior notice. Program information may be made available in languages other than English. University of Kentucky, Kentucky State University, US Department of Agriculture, and Kentucky Counties, Cooperating. Lexington, KY 40506



Disabilities
accommodated
with prior notification.



HIKE! EXPLORE! LEARN!

OUTDOOR ADVENTURE CAMP



**Get together with friends and
learn outdoor survival skills!
Scan below for the
application!**



**MAY 2-3, 2025
STARTS AT 1 PM
\$100 PER PERSON
REGISTER WITH YOUR
COUNTY 4-H AGENT**

**LAKE CUMBERLAND 4-H CAMP
17500 KY-196
NANCY, KY 42544**

**OPEN FOR KIDS AGED 13 AND UP.
THE TEAM OF SKILLED PROFESSIONALS ENSURE
ALL KIDS ARE SAFE 24/7.**

**Cooperative
Extension Service**

Agriculture and Natural Resources
Family and Consumer Sciences
4-H Youth Development
Community and Economic Development

MARTIN-GATTON COLLEGE OF AGRICULTURE, FOOD AND ENVIRONMENT

Educational programs of Kentucky Cooperative Extension serve all people regardless of economic or social status and will not discriminate on the basis of race, color, ethnic origin, national origin, creed, religion, political belief, sex, sexual orientation, gender identity, gender expression, pregnancy, marital status, genetic information, age, veteran status, physical or mental disability or reprisal or retaliation for prior civil rights activity. Reasonable accommodation of disability may be available with prior notice. Program information may be made available in languages other than English. University of Kentucky, Kentucky State University, U.S. Department of Agriculture, and Kentucky Counties, Cooperating.

Lexington, KY 40506



Disabilities
accommodated
with prior notificati



TEEN CONFERENCE

**FIND YOUR SPARK
AND BUILD FRIENDSHIPS**



**10th - 13th June
2025**

About Our Event

Kentucky 4-H Teen Conference is a comprehensive leadership development event tailored for high school 4-H members. This conference is designed to provide youth with a multifaceted experience that combines educational workshops, leadership training, community service, and social activities.

JOIN US!

Event

Highlights

Majors

These workshops are held on the University of Kentucky campus, offering a unique opportunity for youth to experience college life and explore the academic resources available at UK.

Leadership Minor

Focuses on developing essential leadership skills through targeted activities and discussions

Day of Service

Participants engage in community service projects throughout Lexington

Social Activities

These activities include CLOVER Fest, a formal dance, dorm life experience, and area night-out events. These events provide a fun and relaxed environment for youth to connect with their peers.

**CONTACT YOUR
COUNTY 4-H
AGENT**

WEBSITE
extension.ca.uky.edu