

FAYETTE COUNTY 4-H

AUGUST 2024 NEWSLETTER



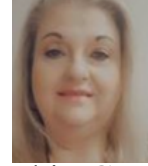
Genaea Sarantakos
4-H Agent
genaea.sarantakos
@uky.edu



Lucas Powell
4-H Agent
lucas.powell213
@uky.edu



Manda Clark
4-H Agent
amanda.clark@
uky.edu



Robin Grace
4-H Program Assistant
robin.grace
@uky.edu



Landon Withers
4-H Program Assistant
landon.withers
@uky.edu



Hello Fayette County!

Happy August! We hope everyone had a wonderful summer! We had a great time at our county fair, teen conference, cloverbud camp, and 4-H camp this year! We will post pictures in our September newsletter. We also hired a new program assistant as well! Please make sure to welcome Landon Withers! He has grown up in the 4-H world including participating in clubs and programs, as well as working at camp, and environmental education camps. We are so thankful to have him! This issue just focuses on enrollment for 2024-2025 programming year and clubs! Please reach out with any questions!

The Fayette County 4-H program is a branch of the Fayette County Cooperative Extension Service that focuses on youth development. Our office is also the host of many programs that are geared towards adults. We highly encourage you to check out our website (fayette.ca.uky.edu) to see what other programs are offered for the whole family!





Fayette County 4-H

We are going to be utilizing an emailed newsletter again for the year 2024–2025 program year. If you are still wanting a paper copy of the newsletter then we can send that, but there will be a delay compared to those who receive electronically.

[Sign up here: bit.ly/fayetteconewsletter](https://bit.ly/fayetteconewsletter)

If you received newsletters last year you do not have to sign up again.

**Cooperative
Extension Service**

Agriculture and Natural Resources
Family and Consumer Sciences
4-H Youth Development
Community and Economic Development

MARTIN-GATTON COLLEGE OF AGRICULTURE, FOOD AND ENVIRONMENT

Educational programs of Kentucky Cooperative Extension serve all people regardless of economic or social status and will not discriminate on the basis of race, color, ethnic origin, national origin, creed, religion, political belief, sex, social organization, gender identity, gender expression, pregnancy, marital status, genetic information, age, veteran status, physical or mental disability or reprisal or retaliation for prior civil rights activity. Reasonable accommodation of disability may be available with prior notice. Program information may be made available in languages other than English.
University of Kentucky, Kentucky State University, U.S. Department of Agriculture, and Kentucky Counties, Cooperating.
Lexington, KY 40526



**Sign up for newsletter here:
bit.ly/fayetteconewsletter**

AMPLIFY
KENTUCKY 4-H



4-H Enrollment begins September 9th.

September 9th, 2024, is the first day of the 2024–2025 program year. We are very excited to offer various clubs and programs again. On September 9th will use the link below to start registration on 4-HOnline. Please do NOT register before September 1st because of the programming year.

Once that is complete you will get the link to sign up for clubs. You can not join a club until your 4-HOnline enrollment is completed.

If you are a new family (never participated in 4-H clubs) you will click the do not have an account button.

If you are a returning family you will click on the new password button. It will need to be an email that has been used before.

Click here for 4-HOnline registration–

<https://v2.4honline.com/#/user/sign-in>

Reach out to Manda at amanda.clark@uky.edu with any questions.

Sign up for 4-HOnline here:

<https://v2.4honline.com/#/user/sign-in>

AMPLIFY KENTUCKY 4-H



Southern Region Teen Leadership Conference (SRTLTC)

September 19th – 22nd 2024
Clyde York 4-H Center,
Crossville, TN

The Southern Region Teen Leadership Conference (SRTLTC) brings together 4-H teens and adults, empowering and inspiring them to create positive change across the Southern Region through youth-adult partnerships. This conference draws participants from six states—Arkansas, Florida, Georgia, Louisiana, Kentucky, and Tennessee—and is held at one of Tennessee's 4-H camps. It provides a platform for youth to build meaningful relationships with 4-H members from across the southern states in a supportive youth development environment.

Highlights:

- T-Shirt Swap
- Taste of States
- Dance
- Educational Workshops

Cooperative Extension Service

Agriculture and Natural Resources
Family and Consumer Sciences
4-H Youth Development
Community and Economic Development

MARTIN-GATTON COLLEGE OF AGRICULTURE, FOOD AND ENVIRONMENT

Educational programs of Kentucky Cooperative Extension serve all people regardless of economic or social status and will not discriminate on the basis of race, color, ethnic origin, national origin, creed, religion, political belief, sex, sexual orientation, gender identity, gender expression, pregnancy, marital status, genetic information, age, veteran status, physical or mental disability or reprisal or retaliation for prior civil rights activity. Reasonable accommodation of disability may be available with prior notice. Program information may be made available in languages other than English.
University of Kentucky, Kentucky State University, U.S. Department of Agriculture, and Kentucky Counties, Cooperating.
Lexington, KY 40506



Disabilities
accommodated
with prior notification.

High School Teens

Cost \$275

Deadline to register is August 29th

Reach out to Manda at amanda.clark@uky.edu

Transportation will be provided!



**Fayette
2024-2025**

UK Martin-Gatton
College of Agriculture,
Food and Environment
University of Kentucky.

ARTS AND CRAFTS CLUB



bit.ly/fayettecoclubsignups

6:00 p.m. - 7:00 p.m.

October 16th

November 6th

December 18th

January 15th

February 19th

March 19th

April 16th

May 21st

**For more information,
please contact Lucas Powell at
Lucas.Powell213@uky.edu**

Cooperative Extension Service

Agriculture and Natural Resources
Family and Consumer Sciences
4-H Youth Development
Community and Economic Development

MARTIN-GATTON COLLEGE OF AGRICULTURE, FOOD AND ENVIRONMENT

Educational programs of Kentucky Cooperative Extension serve all people regardless of economic or social status and will not discriminate on the basis of race, color, ethnic origin, national origin, creed, religion, political belief, sex, sexual orientation, gender identity, gender expression, pregnancy, marital status, genetic information, age, veteran status, physical or mental disability or reprisal or retaliation for prior civil rights activity. Reasonable accommodation of disability may be available with prior notice. Program information may be made available in languages other than English. University of Kentucky, Kentucky State University, U.S. Department of Agriculture, and Kentucky Counties, Cooperating. Lexington, KY 40506



Disabilities
accommodated
with prior notification.

Reach out to Lucas at lucas.powell213@uky.edu with
any questions!
Register here: bit.ly/fayettecoclubsignups



COOKING CLASS

CLOVERBUD CHEF

ONLY
\$30
LIMIT 12
PARTICIPANTS
AGES 5-8



DATES
SEPT 21ST
OCT 19TH
NOV 9TH
JAN 25TH
FEB 8TH
MARCH 22ND

10:00 AM - 11:00 AM
MEETINGS WILL BE HELD AT THE
FAYETTE COUNTY EXTENSION OFFICE

**REGISTRATION
BEGINS SEPT 1ST!**



Questions Contact:
Robin Grace
robin.grace@uky.edu

Cooperative Extension Service
Agriculture and Natural Resources
Family and Consumer Sciences
4-H Youth Development
Community and Economic Development
Lexington, KY 40506

MARTIN-GATTON COLLEGE OF AGRICULTURE, FOOD AND ENVIRONMENT
Educational programs of Kentucky Cooperative Extension serve all people regardless of economic or social status and will not discriminate on the basis of race, color, ethnic origin, national origin, creed, religion, political belief, sex, sexual orientation, gender identity, gender expression, pregnancy, marital status, genetic information, age, veteran status, physical or mental disability or reprisal or retaliation for prior civil rights activity. Reasonable accommodation of disability may be available with prior notice. Program information may be made available in languages other than English.
University of Kentucky, Kentucky State University, U.S. Department of Agriculture, and Kentucky Counties, Cooperating.



Disabilities accommodated with prior notification.

Email Robin at robin.grace@uky.edu for any questions!

Register here:

<https://www.signupgenius.com/go/10CoF44ACAD2CA6FA>

C61-49577866-cloverbud

JUNIOR CHEF

Must be between the ages of 9–13.

Price: \$50 for supplies.

Pay Here: bit.ly/fayettecounty4hpayment

Dates and Times:

***9/4 5:30pm–8:15pm**

9/11 6pm–7pm

9/18 6pm–7pm

9/25 6pm–7pm

10/2 6pm–7pm

10/9 6pm–7pm

**Learn cooking skills, new recipes,
kitchen safety, and have fun!**

**Must be enrolled in 4–H online before
signing up–bit.ly/fayettecoclubsignups**

**Cooperative
Extension Service**

Agriculture and Natural Resources
Family and Consumer Sciences
4-H Youth Development
Community and Economic Development

MARTIN-GATTON COLLEGE OF AGRICULTURE, FOOD AND ENVIRONMENT

Educational programs of Kentucky Cooperative Extension serve all people regardless of economic or social status and will not discriminate on the basis of race, color, ethnic origin, national origin, creed, religion, political belief, sex, sexual orientation, gender identity, gender expression, pregnancy, marital status, genetic information, age, veteran status, physical or mental disability or receipt of retaliation for prior civil rights activity. Reasonable accommodations of disability may be available with prior notice. Program information may be made available in languages other than English.
University of Kentucky, Kentucky State University, U.S. Department of Agriculture, and Kentucky Counties, Cooperating.
Lexington, KY 40506



Reach out to Manda at amanda.clark@uky.edu with any questions!

Register here: bit.ly/fayettecoclubsignups

FAYETTE 4-H HORSE CLUB



OPEN TO YOUTH AGES 9-18 YEARS OLD. WE WILL LEARN ABOUT HIPPOLOGY: ANATOMY, BREEDS, EQUIPMENT AND MORE.

YOU DO NOT HAVE TO OWN A HORSE TO JOIN.

THE CLUB WILL MEET TWICE MONTHLY. DATES WILL BE ANNOUNCED AFTER REGISTRATION

MEETINGS WILL BEGIN IN SEPTEMBER, TYPICALLY WEDNESDAYS AND SATURDAYS AT 6 P.M. AT THE FAYETTE COUNTY COOPERATIVE EXTENSION OFFICE.

YOU MUST REGISTER FOR 4-H BEFORE ATTENDING MEETINGS- THE PROCESS IS NOT LONG!

Cooperative Extension Service
Agriculture and Natural Resources
Family and Consumer Sciences
4-H Youth Development
Community and Economic Development

Educational programs of Kentucky Cooperative Extension serve all people regardless of economic or social status and will not discriminate on the basis of race, color, ethnic origin, national origin, creed, religion, political belief, sex, sexual orientation, gender, gender expression, pregnancy, marital status, genetic information, age, veteran status, or physical or mental disability. University of Kentucky, Kentucky State University, U.S. Department of Agriculture, and Kentucky Counties, cooperating.
LEXINGTON, KY 40546



Disabilities
accommodated
with prior notification

Reach out to Genaea at genaea.sarantakos@uky.edu
with any questions!
Register here: bit.ly/fayettecoclubsignups




FAYETTE COUNTY 4-H STEM CLUB



Join us for our medical sciences themed STEM
workshops this fall!



FIRST MEETING:
AUGUST 30TH AT
5:30PM





First Aid team Challenge/ Chest
Tubes/ Stop the Bleed/ Sutures:
August 30th

CPR: September 27th

Dissection: Eye, Kidney, Heart:
October 25th

Emergency medicines, tools, and IV:
November 22


Dissection: Pig: December 13th



Questions? Email 4-H Agent Genaea
genaea.sarantakos@uky.edu
<https://bit.ly/fayettecoclubsignups>

Reach out to Genaea at genaea.sarantakos@uky.edu
with any questions!

Register here: bit.ly/fayettecoclubsignups

 Cooperative
Extension Service

Ages 5-8
Are
Welcome to
join us



CL^{VER}BUDS

2024-2025

Learn about
4-H in a fun
environment

Registration
begins
September 1st!

Fayette County

Meetings will begin at 11 am or 6 pm

at

1140 Harry Sykes Way
Lexington, KY

For any additional
information, questions
or RSVP contact:

Robin Grace
Fayette County 4-H
Youth Development
Program Assistant

Meeting dates:

Oct 10th
Nov 14th
Dec 12th
Jan 9th
Feb 13th
Mar 13th
Apr 17th
May 8th

robin.grace@uky.edu

Register



Cooperative
Extension Service

Agriculture and Natural Resources
Family and Consumer Sciences
4-H Youth Development
Community and Economic Development

MARTIN-GATTON COLLEGE OF AGRICULTURE, FOOD AND ENVIRONMENT

Educational programs of Kentucky Cooperative Extension serve all people regardless of economic or social status and will not discriminate on the basis of race, color, ethnic origin, national origin, creed, religion, political belief, sex, sexual orientation, gender identity, gender expression, pregnancy, marital status, genetic information, age, veteran status, physical or mental disability or receipt or receipt of prior civil rights activity. Reasonable accommodations of disability may be available with prior notice. Program information may be made available in languages other than English.
University of Kentucky, Kentucky State University, U.S. Department of Agriculture, and Kentucky Counties, Cooperating.
Lexington, KY 40506



Reach out to Robin at robin.grace@uky.edu for any questions. Register here:

<https://www.signupgenius.com/go/10CoF44ACAD2CA6FAC61-49575750-cloverbuds>

Get Creative with Us Today!



Join Our Exciting Home Environment Crafting Club!

Club time 10am-1pm
Pre-registration is
required for each class!
Cost is \$10 per class.
limited 12

**Ages
9-18**

Registration
begins
September 1st

Oct 1st - Simple Rag
Wreath Making
Dec 7th - Welcome Door
Hangers
Jan 6th - Journal / Book
Making
Feb 17 - Hand Stained
Glass
Mar 14th - Jenga Candle
Holders
April 7th - Decoupage



<https://bit.ly/fayettecoclubsignups>

**Cooperative
Extension Service**

Agriculture and Natural Resources
Family and Consumer Sciences
4-H Youth Development
Community and Economic Development

MARTIN-GATTON COLLEGE OF AGRICULTURE, FOOD AND ENVIRONMENT

Educational programs of Kentucky Cooperative Extension serve all people regardless of economic or social status and will not discriminate on the basis of race, color, ethnic origin, national origin, creed, religion, political belief, sex, sexual orientation, gender identity, gender expression, pregnancy, marital status, genetic information, age, veteran status, physical or mental disability or reprisal or retaliation for prior civil rights activity. Reasonable accommodation of disability may be available with prior notice. Program information may be made available in languages other than English.
University of Kentucky, Kentucky State University, U.S. Department of Agriculture, and Kentucky Counties, Cooperating.



Disabilities
accommodated
with prior notification.

Reach out to Robin at robin.grace@uky.edu with any
questions!

Register here: bit.ly/fayettecoclubsignups

Fayette County 4-H



Junior Homemakers

6th-12th grades

This new and exciting club will explore a variety of topics. As an official Kentucky Extension Homemaker, youth will form long lasting friendships while having fun learning life skills.

9/17 6pm-7pm

2/20 6pm-7pm

10/24 6pm-7pm

3/20 6pm-7pm

11/20 6pm-7pm

4/17 6pm-7pm

1/16 6pm-7pm

5/22 6pm-7pm

Must be enrolled in 4-H online.

Sign up here: bit.ly/fayettecoclubsignups

Reach out to Manda at amanda.clark@uky.edu for questions!

**Cooperative
Extension Service**

Agriculture and Natural Resources
Family and Consumer Sciences
4-H Youth Development
Community and Economic Development

MARTIN-GATTON COLLEGE OF AGRICULTURE, FOOD AND ENVIRONMENT

Educational programs of Kentucky Cooperative Extension serve all people regardless of economic or social status and will not discriminate on the basis of race, color, ethnic origin, national origin, creed, religion, political belief, sex, sexual orientation, gender identity, gender expression, pregnancy, marital status, genetic information, age, veteran status, physical or mental disability or reprisal or retaliation for prior civil rights activity. Reasonable accommodation of disability may be available with prior notice. Program information may be made available in languages other than English.
University of Kentucky, Kentucky State University, U.S. Department of Agriculture, and Kentucky Counties, Cooperating
Lexington, KY 40506



Disability
accommodated
with prior notification

Reach out to Manda at amanda.clark@uky.edu with any questions!

Register here: bit.ly/fayettecoclubsignups



Fayette
2024-2025

UK Martin-Gatton
College of Agriculture,
Food and Environment
University of Kentucky.

NATURE CLUB

Second Tuesday

October - May

6:00 p.m. - 7:00 p.m.

Sign up here with the QR code or link.



bit.ly/fayettecoclubsignups

**For more information,
please contact Lucas Powell at
Lucas.Powell213@uky.edu**

**Cooperative
Extension Service**

Agriculture and Natural Resources
Family and Consumer Sciences
4-H Youth Development
Community and Economic Development

MARTIN-GATTON COLLEGE OF AGRICULTURE, FOOD AND ENVIRONMENT

Educational programs of Kentucky Cooperative Extension serve all people regardless of economic or social status and will not discriminate on the basis of race, color, ethnic origin, national origin, creed, religion, political belief, sex, sexual orientation, gender identity, gender expression, pregnancy, marital status, genetic information, age, veteran status, physical or mental disability or reprisal or retaliation for prior civil rights activity. Reasonable accommodation of disability may be available with prior notice. Program information may be made available in languages other than English. University of Kentucky, Kentucky State University, U.S. Department of Agriculture, and Kentucky Counties, Cooperating. Lexington, KY 40506



Disabilities
accommodated
with prior notification.

**Reach out to Lucas at lucas.powell213@uky.edu with
any questions!**

Register here: bit.ly/fayettecoclubsignups



NEEDLE ARTS CLUB

DATES AND TIME:

NOVEMBER 6TH 6PM

NOVEMBER 13TH 6PM

NOVEMBER 20TH 6PM

DECEMBER 4TH 6PM

DECEMBER 11TH 6PM

DECEMBER 18TH 6PM

REACH OUT TO MANDA AT AMANDA.CLARK@UKY.EDU

FOR MORE INFORMATION!



**Cooperative
Extension Service**

Agriculture and Natural Resources
Family and Consumer Sciences
4-H Youth Development
Community and Economic Development

MARTIN-GATTON COLLEGE OF AGRICULTURE, FOOD AND ENVIRONMENT

Educational programs of Kentucky Cooperative Extension serve all people regardless of economic or social status and will not discriminate on the basis of race, color, ethnic origin, national origin, creed, religion, political belief, sex, sexual orientation, gender identity, gender expression, pregnancy, marital status, genetic information, age, veteran status, physical or mental disability or reprisal or retaliation for prior civil rights activity. Reasonable accommodation of disability may be available with prior notice. Program information may be made available in languages other than English.
University of Kentucky, Kentucky State University, U.S. Department of Agriculture, and Kentucky Counties Cooperating.
Lexington, KY 40506



Disabilities
accommodated
with prior notification.

Reach out to Manda at amanda.clark@uky.edu with any questions!

Register here: bit.ly/fayettecoclubsignups

WHY DID THE CHICKEN CROSS THE ROAD?

TO GET TO FAYETTE COUNTY 4-H'S POULTRY CLUB!



OPEN TO YOUTH AGES 9-18 YEARS OLD. YOUTH AND THEIR CHICKENS WILL LEARN BREEDS AND SPECIES, COOKING TECHNIQUES, ANATOMY, SHOWMANSHIP, AND RESPONSIBLE OWNERSHIP.

YOU DO NOT HAVE TO OWN CHICKENS TO JOIN.

THE CLUB WILL MEET MONTHLY BEGINNING IN SEPTEMBER AT 6PM. MEETINGS TAKE PLACE AT THE FAYETTE COUNTY COOPERATIVE EXTENSION OFFICE.

**FOR MORE INFORMATION CONTACT GENAEA AT
GENAEA.SARANTAKOS@UKY.EDU**

**Cooperative
Extension Service**

Agriculture and Natural Resources
Family and Consumer Sciences
4-H Youth Development
Community and Economic Development

MARTIN-GATTON COLLEGE OF AGRICULTURE, FOOD AND ENVIRONMENT

Educational programs of Kentucky Cooperative Extension serve all people regardless of economic or social status and will not discriminate on the basis of race, color, ethnic origin, national origin, creed, religion, political belief, sex, sexual orientation, gender identity, gender expression, pregnancy, marital status, genetic information, age, veteran status, physical or mental disability or reprisal or retaliation for prior civil rights activity. Reasonable accommodation of disability may be available with prior notice. Program information may be made available in languages other than English.
University of Kentucky, Kentucky State University, U.S. Department of Agriculture, and Kentucky Counties, Cooperating.
Lexington, KY 40506



Disabilities
accommodated
with prior notification.

Reach out to Genaea at genaea.sarantakos@uky.edu
with any questions!

Register here: bit.ly/fayettecoclubsignups



UK Martin-Gatton
College of Agriculture,
Food and Environment
University of Kentucky.



FAYETTE COUNTY 4-H RABBIT CLUB

**OPEN TO YOUTH AGES 12-18 YEARS OLD. YOUTH
AND THEIR RABBITS WILL LEARN ABOUT
COMPANIONSHIP, SHOWMANSHIP, AND
RESPONSIBLE OWNERSHIP.**

YOU DO NOT HAVE TO OWN A RABBIT TO JOIN.

**THE CLUB WILL MEET MONTHLY BEGINNING IN
SEPTEMBER AT 6PM. MEETINGS TAKE PLACE AT
THE FAYETTE COUNTY COOPERATIVE EXTENSION
OFFICE.**

**FOR MORE INFORMATION CONTACT GENAEA AT
GENAEA.SARANTAKOS@UKY.EDU**

**Cooperative
Extension Service**

Agriculture and Natural Resources
Family and Consumer Sciences
4-H Youth Development
Community and Economic Development

MARTIN-GATTON COLLEGE OF AGRICULTURE, FOOD AND ENVIRONMENT

Educational programs of Kentucky Cooperative Extension serve all people regardless of economic or social status and will not discriminate on the basis of race, color, ethnic origin, national origin, creed, religion, political belief, sex, sexual orientation, gender identity, gender expression, pregnancy, marital status, genetic information, age, veteran status, physical or mental disability or reprisal or retaliation for prior civil rights activity. Reasonable accommodation of disability may be available with prior notice. Program information may be made available in languages other than English.
University of Kentucky, Kentucky State University, U.S. Department of Agriculture, and Kentucky Counties, Cooperating.
Lexington, KY 40506



Disabilities
accommodated
with prior notification.

Reach out to Genaea at genaea.sarantakos@uky.edu
with any questions!
Register here: bit.ly/fayettecoclubsignups

Fayette County **4-H Teen Club**

Leadership, Friendship, Community Service, and Life Skills

Meeting Dates:

September 12th
October 10th
November 14th
December 12th
January 9th
February 13th
March 13th
April 9th
May 15th
6pm-7pm

**Fayette County Extension Office
Must be registered through 4-H online
to attend!**

Register on 4-H online here:
<https://v2.4honline.com/#/user/sign-in>
Sign up for Teen Club here:
<https://bit.ly/fayettecoclubsignups>

**Cooperative
Extension Service**

Agriculture and Natural Resources
Family and Consumer Sciences
4-H Youth Development
Community and Economic Development

MARTIN-GATTON COLLEGE OF AGRICULTURE, FOOD AND ENVIRONMENT

Educational programs of Kentucky Cooperative Extension serve all people regardless of economic or social status and will not discriminate on the basis of race, color, ethnic origin, national origin, creed, religion, political belief, sex, sexual orientation, gender identity, gender expression, pregnancy, genetic information, age, marital status, physical or mental disability or reproductive decision, or protected rights activity. Reasonable accommodations of disability may be available upon request. Program information may be made available in languages other than English. University of Kentucky, Kentucky State University, U.S. Department of Agriculture, and Kentucky Counties, Cooperating. Lexington, KY 40506.



Disability
accommodated
with prior notification.

Reach out to Manda at amanda.clark@uky.edu with any questions!

Register here: bit.ly/fayettecoclubsignups

FIBER ARTS CLUB



- 10/5 9AM -12PM FIBER ARTS**
 - 10/19 9AM-12PM FIBER DYEING**
 - 11/2 9AM-12PM LOOM WEAVING**
 - 11/23 9AM-12PM BASKETS**
 - 12/7 9AM-12PM FELTED ITEMS**
 - 12/21 9AM -12PM FIBER ARTS ORNAMENT**
 - 1/4 9AM-12PM WINTER FIBER ARTS**
 - 1/25 9AM-12PM WINTER FIBER ARTS**
 - 2/8 9AM-12PM HEART KEEPSAKE**
 - 2/22 9AM-12PM HEART KEEPSAKE**
 - 3/1 9AM-12PM ST. PATRICK'S DAY ART**
 - 4/12 9AM-12PM SPRING BASKET**
 - 5/10 9AM-12PM MACARME**
- \$10 PER CLASS SESSION**



**REACH OUT TO MANDA AT AMANDA.CLARK@UKY.EDU
WITH ANY QUESTIONS.**

Cooperative
Extension Service

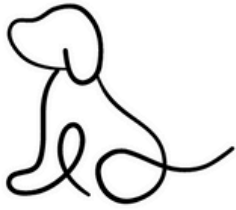
Agriculture and Natural Resources
Family and Consumer Sciences
4-H Youth Development
Community and Economic Development

MARTIN-GATTON COLLEGE OF AGRICULTURE, FOOD AND ENVIRONMENT

Educational programs of Kentucky Cooperative Extension Service are available to all people regardless of economic or social status and will not discriminate on the basis of race, color, ethnic origin, national origin, creed, religion, political belief, sex, marital status, age, gender, identification, pregnancy, marital status, genetic information, or any other status. Persons with disabilities who require special or retaliation for prior civil rights activity, reasonable accommodations of disability may be available with prior notice. Program information may be made available in large print, other than English, or in Braille. University of Kentucky-Kentucky State University, U.S. Department of Agriculture, and Kentucky Counties, Cooperating. Lexington, KY 40546



Reach out to Manda at amanda.clark@uky.edu with any questions!
Register here: bit.ly/fayettecoclubsignups



Volunteers needed



Do you enjoy working with youth and have a skill you could teach? We are looking for 4-H club volunteers with a passion for:

Reading

Shooting Sports

Homeschool

Fitness

Cooking



Fishing

Yoga

Baking

Crochet

Photography



Dog

Cake Decorating

Gardening

Arts and Crafts

Mental Health



Leading a club entails a monthly meeting at the Fayette County Extension office with youth 5-18 (May vary by specific club). Meeting times may vary, but must be 6 educational hours over the course of a program year. If you don't want to commit to a year long club consider leading a workshop series. Contact Genaea (Genaea.sarantakos@uky.edu), Manda (amanda.clark@uky.edu), or Lucas (Lucas.powell213@uky.edu) for more information.

