

# Fayette County Agriculture & Natural Resources Newsletter

June 2025

 Cooperative Extension Service

Cooperative Extension Service  
Fayette County Extension  
1140 Harry Sykes Way  
Lexington, KY 40504-1383  
Phone (859) 257-5582  
Email: [fayette.ext@uky.edu](mailto:fayette.ext@uky.edu)  
<http://fayette.ca.uky.edu/>

Hello all,

We officially reached Lexington's top five wettest springs on record at the end of May. With that being said, expect to see more fungal issues in your crops as we start to get into hot and humid weather in the coming weeks. I have included an article discussing two minor fungal diseases of corn that are expected to show up due to the wet weather and flooding. I have also included the links to the 2025 Corn and Soybean Fungicide Efficacy Guides.

The Federal Emergency Management Agency (FEMA) has also designated multiple counties in Kentucky as natural disaster areas due to the severe storms and flooding we have had. The USDA has issued emergency loans through the Farm Service Agency (FSA) to help producers meet various recovery needs. Please see the flyer in this newsletter for more information or contact the FSA office.

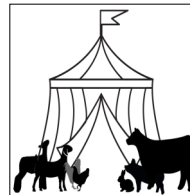
I hope that June brings some drier weather, so that you all may finish your planting and keep on with harvesting your hay. I do want to mention I will have limited office hours this month due to the Bluegrass Fair and our Annual Agriculture Agent meeting mid-month. However, I will still have access to email, so please do not hesitate to reach out with any questions or concerns.



Allison Tucker  
Fayette County Extension Agent for  
Agriculture & Natural Resources  
[allison.tucker@uky.edu](mailto:allison.tucker@uky.edu)  
(859) 257-5582

## UPCOMING EVENTS

**June 5-15, 2025 ~ Lexington  
Lion's Club Bluegrass Fair;**  
Masterson Station Park; For  
more information, go online to  
<https://thebluegrassfair.com/>



**June 23, 2025 ~ Equine Field Day;** Endeavor  
Farm, Versailles, KY; 4:00-8:00pm; Please see  
the flyer in this newsletter for more information  
and how to register for the event.

**August 12, 2025 ~ Cost Share Opportunities  
on Horse Farms;** Texata Farms, Versailles, KY  
9:00am-1:00pm; Please see the flyer in this  
newsletter for more information and how to  
register for the event.

**September 24, 2025 ~ 2025 Intermediate  
Grazing School;** Woodford County Extension  
Office, Versailles, KY; Closer to the date of the  
event, more details will be posted online at  
<https://forages.ca.uky.edu/events>

**October 28, 2025 ~ 2025 KY Grazing  
Conference - East;** Clark County Extension  
Office, Winchester, KY; Closer to the date of  
the event, more details will be posted online at  
<https://forages.ca.uky.edu/events>

The Fayette County  
Extension Office will be  
closed on Thursday,  
June 19<sup>th</sup>, in observance  
of Juneteenth.



Cooperative  
Extension Service

Agriculture and Natural Resources  
Family and Consumer Sciences  
4-H Youth Development  
Community and Economic Development

MARTIN-GATTON COLLEGE OF AGRICULTURE, FOOD AND ENVIRONMENT

Educational programs of Kentucky Cooperative Extension serve all people regardless of economic or social status and will not discriminate on the basis of race, color, ethnic origin, national origin, creed, religion, political belief, sex, sexual orientation, gender identity, gender expression, pregnancy, marital status, genetic information, age, veteran status, physical or mental disability or reprisal or retaliation for prior civil rights activity. Reasonable accommodation of disability may be available with prior notice. Program information may be made available in languages other than English. University of Kentucky, Kentucky State University, U.S. Department of Agriculture, and Kentucky Counties, Cooperating. Lexington, KY 40506



Disabilities  
accommodated  
with prior notification.

# Glazed Cantaloupe Bread

3 eggs  
1 cup unsweetened applesauce  
1 cup sugar  
1 tablespoon vanilla extract  
2 cups pureed cantaloupe (about one 5-inch round melon)  
1½ cups whole wheat flour

1½ cups all-purpose flour  
1 teaspoon salt  
1 teaspoon baking soda  
¾ teaspoon baking powder  
2 teaspoons ground cinnamon

½ teaspoon ground ginger

**Glaze:**  
½ cup butter  
¾ cup brown sugar  
½ cup chopped pecans

**Preheat** oven to 325 degrees F. Lightly **grease** and **flour** two, 9 x 5-inch loaf pans. In a large mixing bowl **beat** together eggs, applesauce, sugar, vanilla and pureed cantaloupe. In a separate bowl, **sift** together flours, salt, baking soda, baking powder, cinnamon and ginger. **Add** flour mixture to cantaloupe mixture; **mix** just until combined, then **pour** batter into prepared pans. **Bake** in the center of a preheated oven for 60 to 70 minutes, until a toothpick inserted into center of loaf comes out clean and top of loaf springs back when pressed. Let loaves **cool** in pans for 10 minutes, run a knife around edge

then **turn out** of pans to a cooling rack.

**For Glaze:** **Combine** butter and brown sugar in a microwave safe bowl. Microwave on high 3 minutes, stirring well at 1 minute intervals, until smooth and sugar is melted; add pecans to the glaze. Pour glaze over warm loaves. Allow glazed loaves to cool one hour before serving.

**Yield:** 20 slices

**Nutritional Analysis:** 200 calories, 8 g fat, 3.5 g saturated fat, 45 mg cholesterol, 20 mg sodium, 32 g carbohydrate, 2 g fiber, 17 g sugars, 4 g protein.



Buying Kentucky Proud is easy. Look for the label at your grocery store, farmers' market, or roadside stand.

For Plate It Up! recipes, visit:

<http://fcs-hes.ca.uky.edu/content/plate-it-kentucky-proud>



For Cook Wild Kentucky recipes, visit:

<https://www.planeatmore.com/recipes>



The Fayette County Extension Office will be closed on Friday, July 4, 2025, in observance of Independence Day.

## From the Woods Today

University of Kentucky Forestry and Natural Resources Extension is offering relevant information about woodlands in a weekly internet show. "From the Woods Today" airs live on **Wednesdays at 11:00am**. Links to the live shows are posted just prior to the show. <https://forestry.ca.uky.edu/woods-today>



**WEATHER ALERT**  
ALERTS FORECASTS AGRICULTURE



for android



for iOS

## Forage Timely Tips: June

Source: **UK Forage News**, <https://kyforagenews.com>

- Continue hay harvests. Minimize storage losses by storing hay under cover.
- Clip pastures for weeds and seedheads as needed.
- Start to slow grazing rotations allowing for a longer recovery period.
- Use portable fencing to decrease paddock size and increase paddock number.
- Do NOT grazing below the minimum desired residual height.
- If present, johnsongrass can provide high quality summer forage when grazed or cut at a vegetative stage
- Crabgrass, a warm-season annual grass, can provide high quality summer grazing. If desired, remember crabgrass needs some annual soil disturbance to keep coming back.
- Begin grazing native warm-season grasses. Start at 18-20" and stop at 8-10".



# COST SHARE OPPORTUNITIES ON HORSE FARMS

Field day hosted by University of Kentucky Extension and Texata Farms

## HIGHLIGHTS

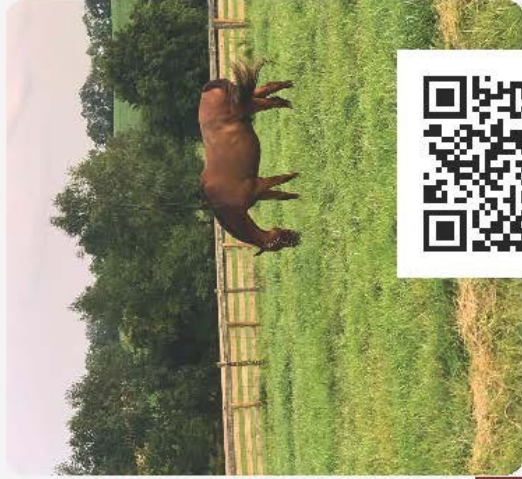
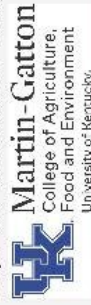
- See conservation practices on a working farm
- On-site cost share applications
- Educational lectures
- Free to attend – breakfast included!

## Event Information:

**SAT., AUGUST 9, 2025**

From 9 AM – 1 PM

4665 Troy Pike, Versailles, KY 40383



RSVP at: <https://CostShare.eventbrite.com> or scan the QR code

# EQUINE FIELD DAY

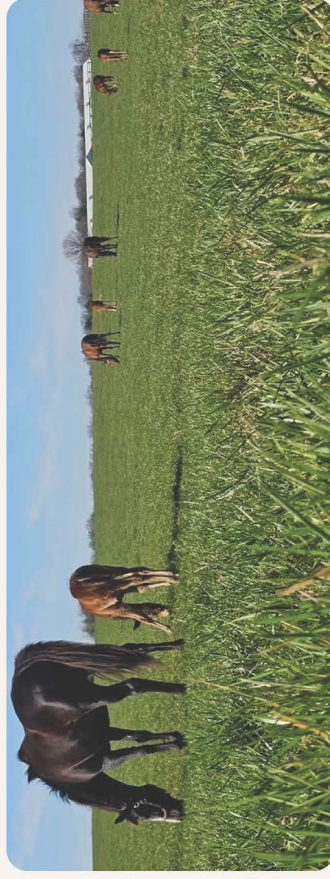
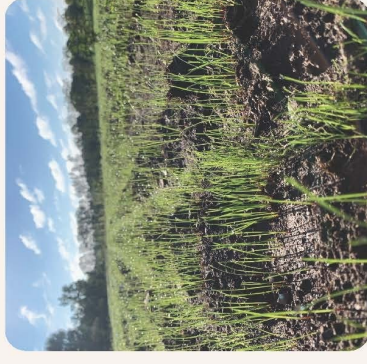


## Hosted by Endeavor farm

- Free to attend
- Dinner included
- Farm tour
- Educational lectures with experts

## Highlights Include:

- Improved pasture management
- Novel Endophyte Tall Fescue
- Hay evaluation



**23 JUNE 2025 | 4-8 PM**

Endeavor Farm – 3110 Old Frankfort Pike, Versailles, KY 40383

RSVP at <https://EndeavorFieldDay.eventbrite.com> or scan the QR code





## Corn Diseases Associated with Ponding

Kiersten Wise, UK Extension Plant Pathologist, *Kentucky Field Crops News*

Recent rains and waterlogged soils have led to localized areas of ponding in emerged corn. Corn that is underwater briefly can recover but may be impacted by several diseases. Two minor diseases, crazy top and Physoderma brown spot may be problematic in areas where corn is underwater for 24-48 hours.

Crazy top is caused by a fungal-like organism called *Sclerophthora macrospora*. This pathogen survives in soil and infects young corn plants when there is excess rain or ponding in the spring. Crazy top symptoms are most often observed at tasseling when distorted and malformed tassels appear in areas that were ponded or saturated (Fig. 1). However, in some fields symptoms may be less diagnostic, and include stunting, tillering, thin, yellow leaves, and barren plants. More on crazy top can be found in the UK publication Crazy Top of Corn.

Physoderma brown spot is caused by the fungus *Physoderma maydis* which also survives in soil and residue and infects corn plants when plants are ponded or excess water remains in the whorl. The symptoms typically appear in the late vegetative stages through pollination and are characterized by very small chocolate brown or yellow lesions on the leaves and midrib (Fig. 2). The lesions may appear in a banded pattern. The lesions can also be found on the stalk, leaf sheath, or ear husks. Read Physoderma Brown Spot of Corn for more information.

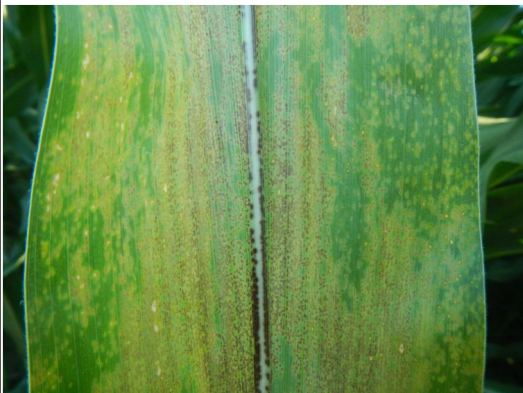


Figure 2. Symptoms of Physoderma brown spot on leaves  
(Picture courtesy Kiersten Wise)



Figure 1. Classic symptoms of crazy top in corn.

Crazy top and Physoderma brown spot rarely need management and are usually only problematic when water covers the whorl of the plant for short periods of time. Improving soil drainage and removing infected plants will reduce the disease risk for subsequent crops. Fungicides are labeled for Physoderma brown spot management, but symptoms are usually not severe enough to warrant preventative fungicide applications.

### Publication Spotlight:

#### Improving Kentucky Horse Pastures (AGR-281)

For many horses, quality pasture can provide almost all nutrients needed for maintenance or light work for much of the year. For more information on pasture and grazing management, go on line to <https://publications.ca.uky.edu/agr-281>

If you would like a hard copy of AGR-281 mailed to you, please email [allison.tucker@uky.edu](mailto:allison.tucker@uky.edu).

# Stakeholder Notification

## Federal Emergency Management Agency Designates Multiple Counties in Kentucky as Natural Disaster Areas Due to Severe Storms, Straight-line Winds, Tornadoes, Flooding, Landslides and Mudslides

This Presidential disaster declaration allows the United States Department of Agriculture (USDA) Farm Service Agency (FSA) to extend much-needed emergency credit to producers recovering from natural disasters through [emergency loans](#). Emergency loans can be used to meet various recovery needs including the replacement of essential items such as equipment or livestock, reorganization of a farming operation, or to refinance certain debts. FSA will review the loans based on the extent of losses, security available, and repayment ability.

### 1. Triggering Presidential Designation M4864:

**Impacted Area:** Kentucky

**Triggering Disaster:** Severe Storms, Straight-line Winds, Tornadoes, Flooding, Landslides and Mudslides that occurred on April 02, 2025 and continuing

**Application Deadline:** 12/24/2025

#### **Primary Counties Eligible:**

- **Kentucky:** Anderson, Butler, Carroll, Christian, Clark, Franklin, Hardin, Hopkins, Jessamine, McCracken, Mercer, Owen, Woodford

#### **Contiguous Counties Also Eligible:**

- **Illinois:** Massac, Pulaski
- **Indiana:** Harrison, Jefferson, Switzerland
- **Kentucky:** Ballard, Bourbon, Boyle, Breckinridge, Bullitt, Caldwell, Carlisle, Edmonson, Estill, Fayette, Gallatin, Garrard, Grant, Graves, Grayson, Hart, Henry, Jefferson, Larue, Livingston, Logan, McLean, Madison, Marshall, Meade, Montgomery, Muhlenberg, Nelson, Ohio, Powell, Scott, Shelby, Spencer, Todd, Trigg, Trimble, Warren, Washington, Webster
- **Tennessee:** Montgomery, Stewart

### 2. Triggering Presidential Designation M4864 Amendment 1:

**Impacted Area:** Kentucky

**Triggering Disaster M4864 Amendment 1:** Severe Storms, Straight-line Winds, Tornadoes, Flooding, Landslides and Mudslides that occurred on April 02, 2025 and continuing



Continued from previous page: USDA Stakeholder Notification

**Application Deadline:** 01/14/2026

**Primary Counties Eligible:**

- **Kentucky:** Breckinridge, Bullitt, Calloway, Daviess, Garrard, Grayson, Hancock, Hart, Henderson, Henry, Jefferson, Larue, Lincoln, McLean, Meade, Muhlenberg, Nelson, Ohio, Oldham, Pendleton, Powell, Trimble, Warren, Webster

**Contiguous Counties Also Eligible:**

- **Indiana:** Clark, Crawford, Floyd, Harrison, Jefferson, Perry, Posey, Spencer, Vanderburgh, Warrick
- **Kentucky:** Allen, Anderson, Barren, Boyle, Bracken, Butler, Caldwell, Campbell, Carroll, Casey, Christian, Clark, Crittenden, Edmonson, Estill, Franklin, Grant, Graves, Green, Hardin, Harrison, Hopkins, Jessamine, Kenton, Lee, Logan, Madison, Marion, Marshall, Menifee, Mercer, Metcalfe, Montgomery, Owen, Pulaski, Rockcastle, Shelby, Simpson, Spencer, Taylor, Todd, Trigg, Union, Washington, Wolfe
- **Ohio:** Clermont
- **Tennessee:** Henry, Stewart

**More Resources**

On farmers.gov, the [Disaster Assistance Discovery Tool](#), [Disaster Assistance-at-a-Glance fact sheet](#), and [Loan Assistance Tool](#) can help you determine program or loan options. To file a Notice of Loss or to ask questions about available programs, contact your local [USDA Service Center](#).

FEMA offers different assistance programs for individual citizens, public groups including government agencies and private nonprofit organizations. To find the FEMA help you need following a disaster event, visit [fema.gov/assistance](https://www.fema.gov/assistance).

#

*USDA is an equal opportunity provider, employer, and lender.*

## University of Kentucky BBQ Basics Program

Do you want to step-up your BBQ game or do you want to learn how to BBQ? The University of Kentucky BBQ Basics is the program you need to go from grilling to BBQing and become the King/Queen of the Cul-de-sac. Take a tour of the major BBQ regions of the country and never leave the W.P. Garrigus Building parking lot. Learn from our local experts and sample the BBQ. Come hungry and leave full. We will end the evening at the UK James B. Beam Distillery on campus for a bourbon tasting and discussion on pairing bourbon, bourbon cocktails, and local beer with BBQ. The BBQ Tour: Make your own BBQ rub, California Tri Tip, Memphis Pork Ribs, North Carolina Pulled Pork, Kansas City Burnt Ends, Texas Brisket.

This program will meet on Friday, July 25, 2025, 2:00-7:00pm EDT, at the University of Kentucky Meat Science Laboratory and B52 of the W.P. Garrigus building. **Cost: \$75/person**, seating is limited to 30 people. Register online at <https://www.eventbrite.com/e/university-of-kentucky-bbq-basics-tickets-1389485551689?aff=oddtcreator>.

**Questions/Contact:** Dr. Gregg Rentfrow, Ph.D. ([gregg.rentfrow@uky.edu](mailto:gregg.rentfrow@uky.edu); 859-257-7550)

## 2025 Corn and Soybean Fungicide Efficacy Guides

The ratings in these guides reflect the efficacy of a fungicide against a given disease and are not rating yield response to a fungicide. It is an applicator's legal responsibility to read and follow label directions.

Updated tables include:

- Fungicide Efficacy for Control of Corn Diseases  
<https://cropprotectionnetwork.org/publications/fungicide-efficacy-for-control-of-corn-diseases>
- Fungicide Efficacy for Control of Soybean Seedling Diseases  
<https://cropprotectionnetwork.org/publications/fungicide-efficacy-for-control-of-soybean-seedling-diseases>
- Fungicide Efficacy for Control of Soybean Foliar Diseases  
<https://cropprotectionnetwork.org/publications/fungicide-efficacy-for-control-of-soybean-foliar-diseases>

# Weekly Kentucky Livestock and Grain Summary

# USDA Livestock, Poultry and Grain Market News

Frankfort, KY

Monday, June 2, 2025

For Week Ending:

Friday, May 30, 2025

Receipts: 12,124

Last Week: 14,820

Last Year: 10,357

Compared to last week feeder steers and heifers sold unevenly steady. Yearling steers and heifers were lightly tested with limited comparison. Demand was moderate to good for all feeder and yearling classes with best interest for long weaned thin fleshed calves suitable for grass. Slaughter cows and bulls sold mostly steady to 5.00 'higher with good to very good demand.

[View Full Summary](#)

Steers (M&L 1-2)	This Week	Prior Week	Last Year
350-400 lbs	424.56	434.15	332.55
400-450 lbs	408.45	408.60	320.87
450-500 lbs	396.41	392.76	322.83
500-550 lbs	370.91	367.77	301.20
550-600 lbs	360.01	362.29	296.50
600-650 lbs	338.92	335.39	281.69
650-700 lbs	322.58	330.10	275.31
700-750 lbs	301.25	302.25	260.98
750-800 lbs	295.37	292.35	247.00
800-850 lbs	285.68	279.08	236.46
850-900 lbs	275.57	276.61	228.08
Heifers (M&L 1-2)			
300-350 lbs	389.38	387.11	298.18
350-400 lbs	395.47	378.17	298.60
400-450 lbs	375.05	360.73	291.40
450-500 lbs	347.60	346.88	284.42
500-550 lbs	329.21	332.80	271.96
550-600 lbs	330.35	322.04	264.44
600-650 lbs	302.46	295.35	243.85
650-700 lbs	288.30	285.46	244.21
700-750 lbs	273.49	267.77	221.27
750-800 lbs	265.59	257.76	220.93

## WEEKLY COW SUMMARY

Slaughter Cows	Average	High	Low
Breakers	137.00-170.00	158.00-193.00	129.00-159.00
Boners	135.00-170.00	151.00-197.00	125.00-161.00
Lean	110.00-161.00	137.00-177.50	105.00-145.00
Slaughter Bulls	Average	High	Low
Yield Grade 1&2	159.00-217.00	188.00-246.00	140.00-189.00

[View Full Report](#)

May 22, 2025

Bowling Green, KY

## SLAUGHTER GOATS: 215

**Kids Selection 1** 52-53 lbs 370.00-415.00; 65 lbs 360.00; 70 lbs 380.00. **Selection 1-2** 85 lbs 285.00; 130 lbs 275.00. **Selection 2-3** 50 lbs 255.00; 85 lbs 220.00.

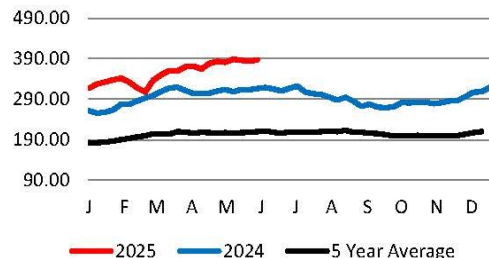
## SLAUGHTER SHEEP: 1,202

**Hair Breeds-Choice & Prime 1-2** 57 lbs 240.00-245.00; 65-67 lbs 237.50-277.50; 74-75 lbs 250.00-29.00; 86 lbs 267.50; 93 lbs 235.00; 110 lbs 245.00. **Choice 2** 50-55 lbs 270.00-272.50; 64 lbs 267.50; 76 lbs 267.50; 87 lbs 257.50. **Wooled-Choice & Prime 1-2** 53 lbs 250.00; 69 lbs 260.00; 92 lbs 260.00; 111 lbs 235.00.

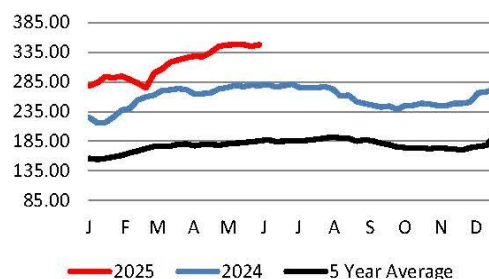
[View Latest Grain Report](#)

GRAINS	This Week	Prior Week	Last Year
Corn	4.20-4.82	4.40-4.82	4.16-4.68
Soybeans	9.79-10.82	9.90-10.77	11.40-12.48
Red Winter Wheat	4.39-5.37	4.12-5.45	5.93-6.93

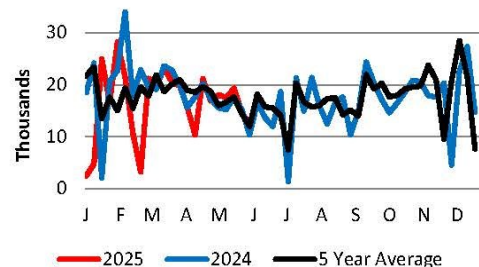
WEEKLY 400-600 LB FEEDER STEER M&L 1-2  
WEIGHTED AVERAGE PRICE (\$/CWT)



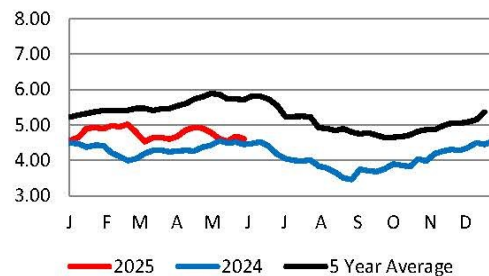
WEEKLY 400-600 LB FEEDER HEIFER M&L 1-2  
WEIGHTED AVERAGE PRICE (\$/CWT)



WEEKLY KENTUCKY CATTLE AUCTION RECEIPTS



WEEKLY KENTUCKY CORN BID AVERAGE PRICE  
(\$/CWT)



USDA-KY Livestock, Poultry & Grain Market News  
Frankfort, KY

Levi Geyer, OIC 502-782-4138

Email: [Levi.Geyer@usda.gov](mailto:Levi.Geyer@usda.gov)

[USDA Livestock, Poultry, and Grain Market News](#)

# Cooperative Extension Service

Fayette County Cooperative Extension  
1140 Harry Sykes Way  
Lexington, KY 40504-1383

RETURN SERVICE REQUESTED

NONPROFIT ORG  
US POSTAGE PAID  
LEXINGTON KY  
PERMIT 112

## Fayette County Cooperative Extension Agriculture & Natural Resources Newsletter

*The Martin-Gatton College of Agriculture, Food and Environment is an Equal Opportunity Organization with respect to education and employment and authorization to provide research, education information and other services only to individuals and institutions that function without regard to economic or social status and will not discriminate on the bases of race, color, ethnic origin, national origin, creed, religion, political belief, sex, sexual orientation, gender identity, gender expression, pregnancy, marital status, genetic information, age, veteran status, physical or mental disability or reprisal or retaliation for prior civil rights activities. Reasonable accommodations of disability may be available with prior notice. Program information may be made available in languages other than English. Inquiries regarding compliance with Title VI and Title VII of the Civil Rights Act of 1964, Title IX of the Educational Amendments, Section 504 of the Rehabilitation Act and other related matter should be directed to Equal Opportunity Office, Martin-Gatton College of Agriculture, Food and Environment, University of Kentucky, Room S-105, Agriculture Science Building, North Lexington, Kentucky 40546, the UK Office of Institutional Equity and Equal Opportunity, 13 Main Building, University of Kentucky, Lexington, KY 40506-0032 or US Department of Agriculture, Office of the Assistant Secretary for Civil Rights, 1400 Independence Avenue, SW, Washington, D.C. 20250-9410.*



Allison Tucker  
County Extension Agent for Agriculture  
& Natural Resources  
Cooperative Extension Service  
Fayette County Extension Service  
1140 Harry Sykes Way  
Lexington, KY 40504-1383  
(859) 257-5582



Office Hours: 8:00am - 4:30pm - Monday-Friday

UNIVERSITY OF KENTUCKY,  
KENTUCKY STATE UNIVERSITY, U.S.  
DEPARTMENT OF AGRICULTURE, AND  
KENTUCKY COUNTIES, COOPERATING



[https://www.facebook.com/  
FayetteCoANR/](https://www.facebook.com/FayetteCoANR/)